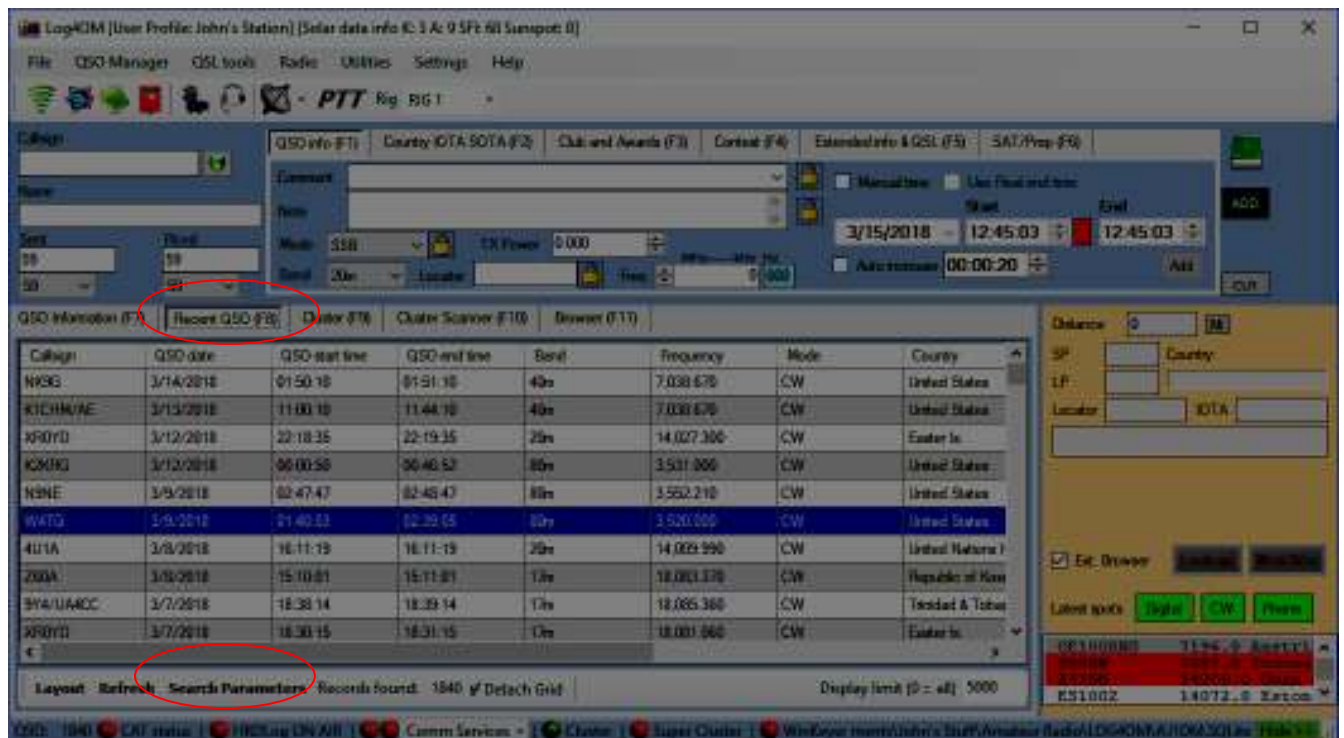


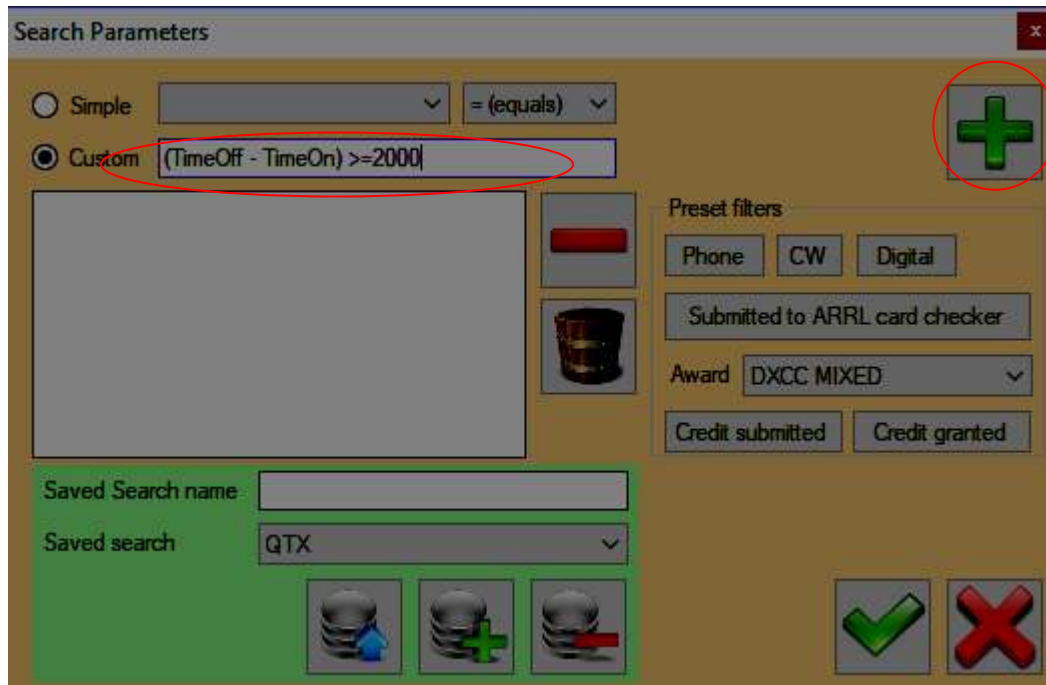
Starting out on the “Recent QSO (F8)” tab, I click “Search Parameters” near the bottom of the window:



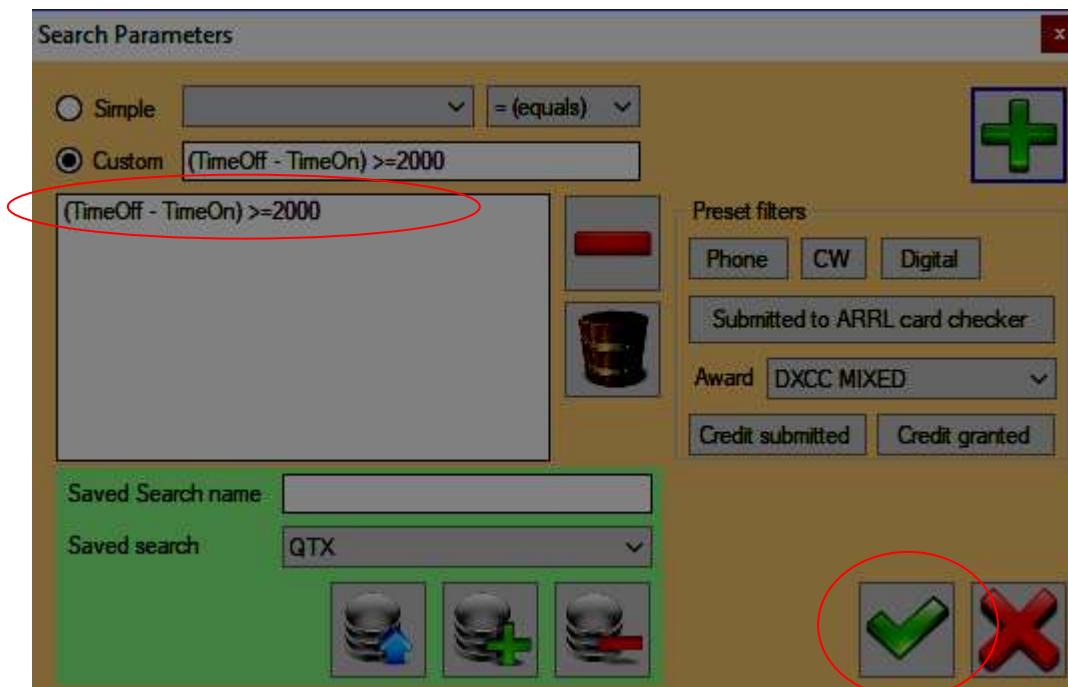
which brings me here, where I click the “Custom” radio button:



Then I type in a formula, in this case attempting to identify qso's lasting more than 20 minutes, then click the + sign:



which moves the formula into the big box. Finally I click the check button to execute the filter:



Due to the filter LOG4OM is now displaying only 336 qso's, which means some qso's have been eliminated – good! However, look at DL8MX – this qso started at 19:55 and ended at 20:06, which is significantly less than 20 minutes.

The screenshot shows the Log4OM software interface. The main window displays a list of QSOs with columns for Call sign, QSO date, QSO start time, QSO end time, Band, Frequency, Mode, and Country. The QSO for DL8MX is highlighted with a white arrow pointing to its end time of 20:06. The status bar at the bottom indicates 336 records found.

Call sign	QSO date	QSO start time	QSO end time	Band	Frequency	Mode	Country
K1CHM/AE	3/13/2018	11:00:18	11:44:18	40m	7.038.678	CW	United States
K0KRG	3/12/2018	00:00:58	00:46:52	80m	3.531.800	CW	United States
W4TQ	3/9/2018	01:40:03	02:29:05	80m	3.520.000	CW	United States
W4TQ	3/8/2018	01:50:27	02:43:19	40m	7.028.430	CW	United States
DL8MX	3/5/2018	19:55:43	20:06:06	40m	7.007.996	CW	Fed. Republic of
T4HLYL	3/5/2018	19:55:34	20:00:03	20m	14.002.980	CW	Turkey
K0KRG	3/5/2018	01:00:11	01:43:37	80m	3.525.530	CW	United States
W4TQ	3/5/2018	01:04:28	01:52:12	80m	3.525.500	CW	United States
N2DA	2/27/2018	01:02:36	01:46:46	80m	3.770.000	CW	United States
W4TQ	2/16/2018	00:59:41	01:51:41	80m	3.525.010	CW	United States

Records found: 336